

# TUSKER-TERMINALS (Energy Efficient & Power Saving Connector)

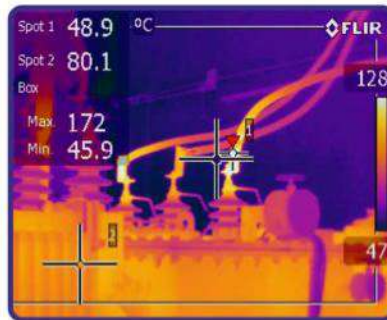


Transformers are essential component of power distribution system which have to work relentlessly with efficiency and reliably. Handling **different conductor materials and their connections** in electrical system are critical and one of the ignored subject as of now. Everywhere **crimping, bolting and binding** is used for connections. Currently Aluminium, Aluminium Alloys, Copper and Copper Alloys have been used for various applications.

Hence we at SHRIPAT TECH-INNOVATION designed and developed new engineered TUSKER-Terminals range which gives safe, firm, energy efficient & reliable connections for this specific industry need.

## Industry Challenges :

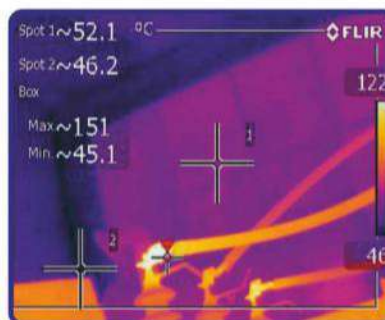
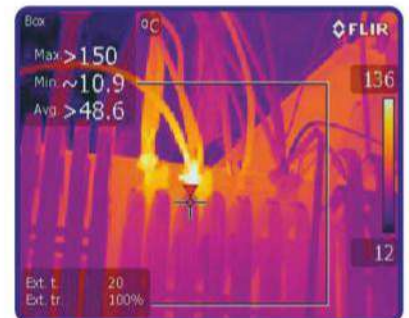
Revenue Losses, Demand Management, Overheating, Multiple Cable Connection handling, Phase balancing, Oil Leakages from Bushings, Issues with Porcelain Bushings like transit damages



**Undesirable**  
Overheated Connection Hot-Spots  
leads to Transformer shutdowns &  
finally failures



**Unreliable**  
With Safety and O&M Issues  
leads to AT&C Losses, High OPEX

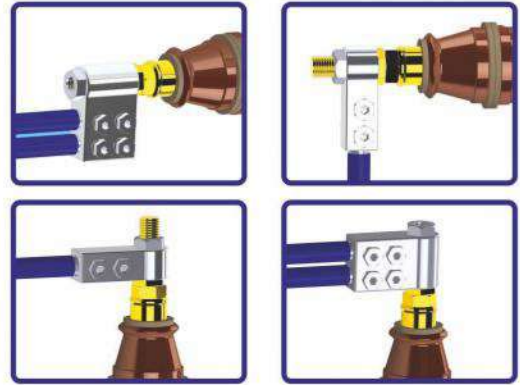


# TUSKER-TERMINALS (Energy Efficient & Power Saving Connector)

## Existing Connection Practices



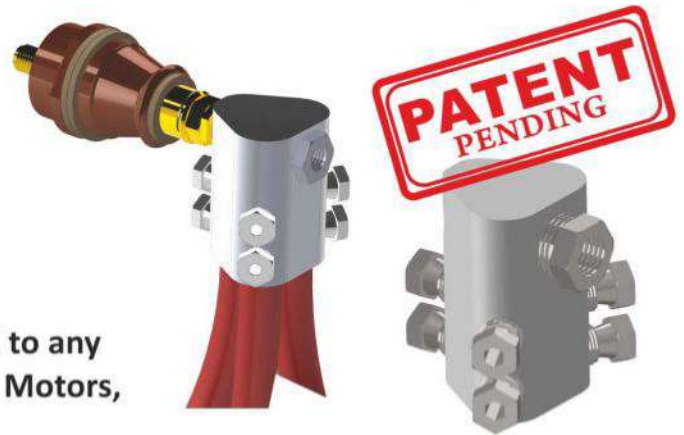
## New Solution



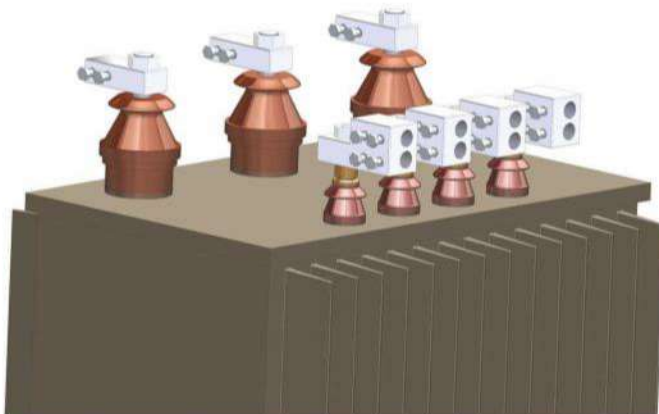
### For Distribution and Power Transformers

- **Equipment Connector Application**  
Proven Design and Manufactured from High Conductivity Al Alloy Factory applied Oxide Inhibiting Compound
- **Reliability and Consistency**  
Manufactured on Automatic CNC Machines  
Special Customized Surface Treatment and Finishing
- **Simple and Fool-proof Installation by Ratchet Spanner**  
Torque Controlled Shear Bolt for eliminating human error
- **Can be provided with Cold applied / Heat Shrink insulations**
- **Light Weight and Easy to install compatible with**  
Copper, Copper Alloys, Aluminium and Aluminium Alloys

- **Advantages over existing connectors**  
No Crimping hence NO tools & dies needed,  
Range Taking Connectors, Accepts CU and AL



This patented energy efficient design can be extended to any equipment connector like ACB, Generators, Industrial Motors, Switchgears etc....based on application



Product Code	Stud Size $\phi$ mm	Cable Range mm <sup>2</sup>	Outgoing Nos	Current Rating A*
STT-1001	M12	16-50	1	150
STT-1002			2	250
STT-1003		50-95	1	250
STT-1004			1	400
STT-1005	M20	95-150	2	630
STT-1006			1	630
STT-1007	M30	240-400	1	630
STT-1008			2	1000
STT-1009			3	
STT-1010	M42	400-630	2	1000
STT-1011			3	2000
STT-1012			4	
STT-2001 (for MV)	M12	25-150 (Squirrel to Dog)	1	150

\*Note: Rating can be changed based on parameters