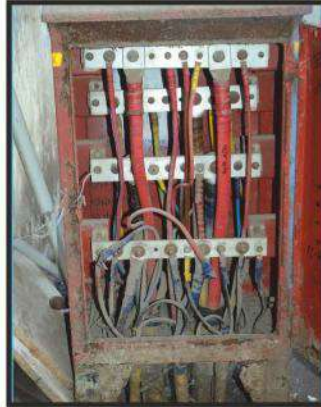


Electrical Issues or Problems faced by Customers



Safety & Theft Issues from Feeder Pillars

Termpering from Meter Boxes

DISTRIBUTION BOX

For multi-tapping application in domestic connections instead of large no of IPCs, utilities prefer to have DB which is Plastic Enclosure and connections within. These boxes are made up of Weather-Resistant plastic which are reliable for OUTDOOR application. Connections can be of bolted/screwed or latest spring loaded.



| Junction Box / Distribution Box | | |
|---------------------------------|--------------|-------------|
| Designation | Single Phase | Three Phase |
| DB - SP - 0109 | 9 | 0 |
| DB - SP - 0118 | 18 | 0 |
| DB - TP - 0104 | 0 | 4 |
| DB - TP - 0109 | 0 | 9 |

METER BOX

These boxes are mainly used for SPN and TPN meters at consumer end and have combinations as follows

| Pre-wired Box for Energy Meters Connections | | |
|---|---------------|---------------|
| Type | Single Phase | Three Phase |
| 2 Way | PWMB - 2 - SP | PWMB - 2 - TP |
| 4 Way | PWMB - 4 - SP | PWMB - 4 - TP |
| 8 Way | PWMB - 8 - SP | |

MINI PILLAR BOX / SERVICE PILLAR

These boxes are made up suitable Polymer or metal CRCA sheet with Powder Coating and have below combination



| Mini Feeder Pillar Box / Mini Pillar / Sevice Pillar | | |
|--|--------------|-------------|
| Designation | Single Phase | Three Phase |
| Mini FPB - 1-1-0306 | 18 | 6 |
| Mini FPB - 1-1-0308 | 24 | 8 |

STREET LIGHT BOX

These boxes are having provision of taking SPN connection from TPN (4 CORE) Cable. It mainly have IN-OUT system in plastic box where one tap also taken for street light.

| STREET LIGHT BOX | | |
|------------------|--------------|-------------|
| Designation | Single Phase | Three Phase |
| SLB - 0301 | 1 | 1 |
| SLB - 0101 | 1 | 0 |